

BLUE CHIP STRUCTURES



Uncompromising Quality and Service



60'x120' Arena with 12'x100' Lean-To



72'x200' Arena with 68'x84' Stall Barn



30'x56' Gambrel Frame Building with Full Loft



30'x25' Garage with Attic Trusses



78'x76' Showroom with 48'x8' office



30'x52' Garage

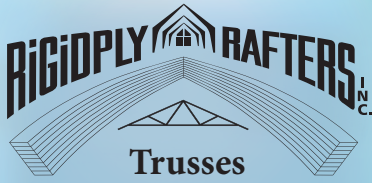


30'x60' Storage Building



36'x72' Stall Barn with 12' Lean-To

Industry leading material suppliers provide premium products and flexibility in every Blue Chip Structures, Inc. Build Package.



Trusses

- ▶ Each truss is designed and sealed by a registered professional engineer
- ▶ Only premium structural quality kiln-dried lumber is used
- ▶ All connections are made by galvanized steel connector plates
- ▶ Member TPI Quality Control Inspection Program
- ▶ Forest Stewardship Council Certified



Glu-Lam Columns

- ▶ Lighter, straighter, and stronger than solid or nail-laminated posts
- ▶ C.C.A. treated laminations for below ground use on ground contact end
- ▶ Untreated wood above ground to minimize fastener and hardware corrosion
- ▶ Rigidply has been glue-laminating premium timbers for over 50 years
- ▶ The original Glu-Lam column



Wood Siding and Interior Finish

- ▶ White Pine Siding
 - ▶ 1x12 Rough sawn board and batten
 - ▶ 1x8 Tongue & groove, V-groove
 - ▶ Ship Lap
- ▶ Texture 1-11
- ▶ Cedar
- ▶ Interior Finishes
 - ▶ 2x6 Tongue & groove, V-groove
 - ▶ 1x8 Tongue & groove, V-groove



Standing Seam Roofing Panels

- ▶ True standing seam
- ▶ Heavy 24 gauge steel
- ▶ Industry leading warranty
- ▶ 16" coverage, 1½" high rib
- ▶ Concealed fastening system



Grandrib 3® Plus Roofing & Siding Panels

- ▶ Best Metal warranty in the industry
- ▶ 10 layers of protection gives you best long-term performance
- ▶ Up to 50% stronger than some competitors
- ▶ Thicker steel than most competitors
- ▶ 25%-50% more galvanized coating



- ▶ Horse stall grills and hardware
- ▶ Champion sliding doors
- ▶ Equus steel dutch doors
- ▶ Sliding, single hung, and fixed light windows
- ▶ Commercial grade insulated entry doors
- ▶ Pre-fabricated steel cupolas with weathervanes

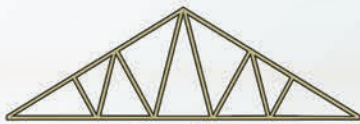
The Blue Chip Advantage

The Storm Frame Plus® system of interconnected building components will allow you and us to sleep well at night with the knowledge that your building has been designed to industry-leading standards. From the largest truss to the smallest connection, we engage in complete 'load path design', insuring the transfer of the applied wind or snow loads from component to component until they are dissipated into the ground.

There is simply more lumber and bracing in the Storm Frame Plus® system than any competitor offers. Better bracing means better performance, longer building life, and greater structural integrity.

Pre-engineered Trusses

Trusses are manufactured to the most current Truss Plate Institute standards out of the highest quality Southern Yellow Pine and Spruce-Pine-Fir lumber and high strength MiTek® steel truss plates. Trusses are designed by an experienced staff of engineers who tailor each truss to meet your specific needs of style and shape. Our 4' o.c. or less standard truss spacing guarantees a rigid roof system and efficient construction in the field; allowing the contractor to save time and allowing you to save money.



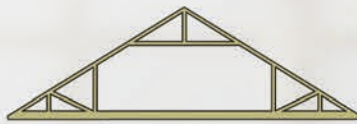
Regular



Scissors



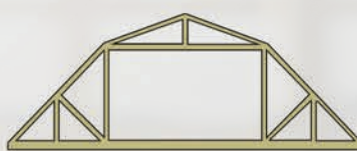
Polynesian



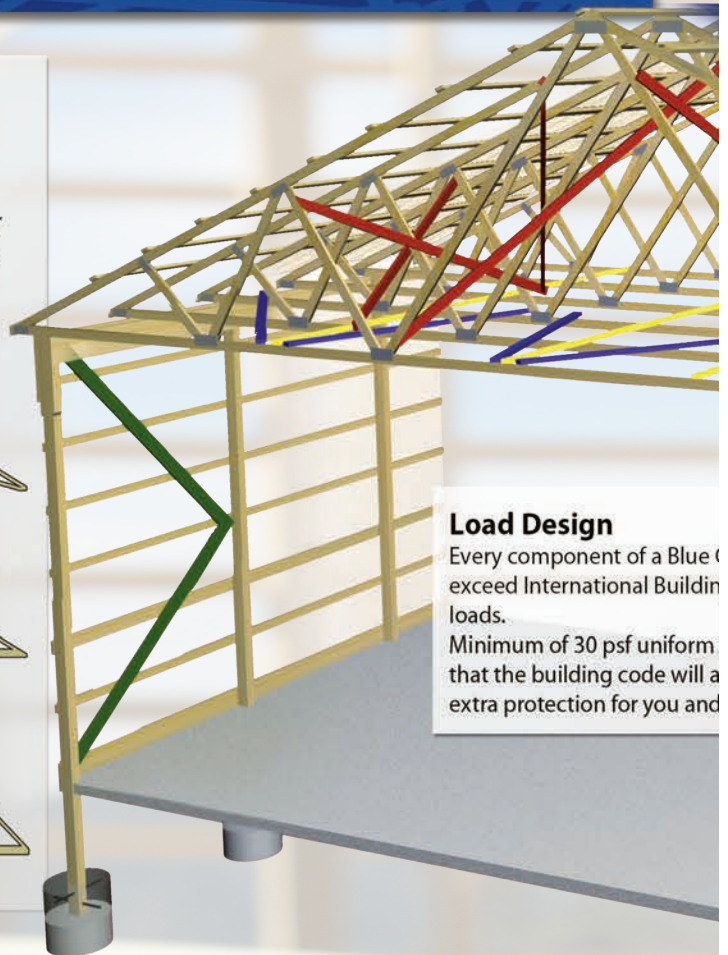
Attic



Gambrel Rafter



Gambrel Attic



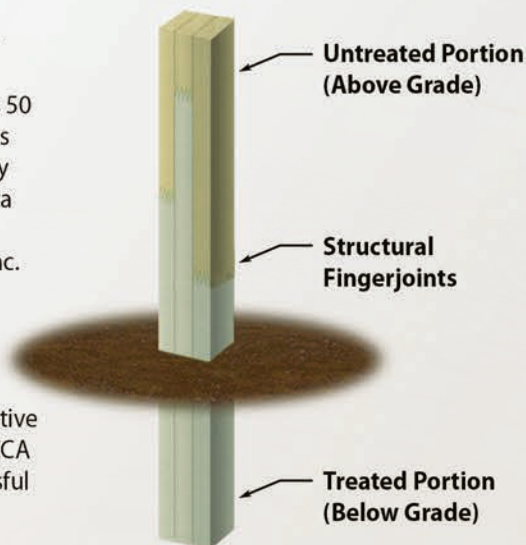
Load Design

Every component of a Blue Chip Structure will exceed International Building Code loads. Minimum of 30 psf uniform roof load that the building code will allow for extra protection for you and your investment.

Glue Laminated Posts

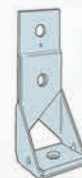
Blue Chip Structures, Inc. uses Rigidply Rafters, Inc. Glulam Posts in all of our building systems. Backed by Rigidply's 50 Year warranty, our glue laminated posts outperform the competition. Testing by Penn State University and South Dakota State University have confirmed the superior strength of Rigidply Rafters, Inc. Glulam Posts as compared to the competition's nail-laminated columns and 6x6 posts.

All glue laminated posts used in below grade applications are preservative treated before gluing with a 0.60 pcf CCA formulation having a history of successful "no decay" testing and in-place performance dating back more than 70 years.

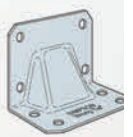


Custom Connections

From the smallest nail to the large beam pocket we design your building with the most efficient and accurate connections available to guarantee the integrity of the structure.



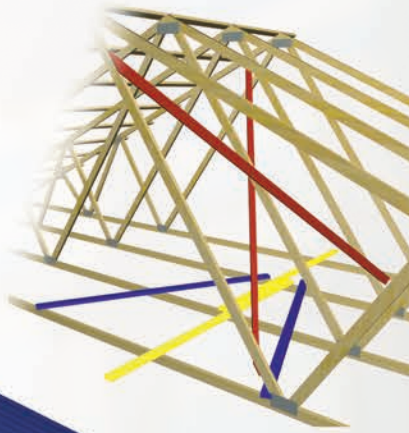
Holdowns



**Gusset Angle
SIMPSON CONNECTION**

Truss Bracing

The Storm Frame Plus® system incorporates more truss bracing lumber into the roof system than any other pre-engineered building supplier in the marketplace.

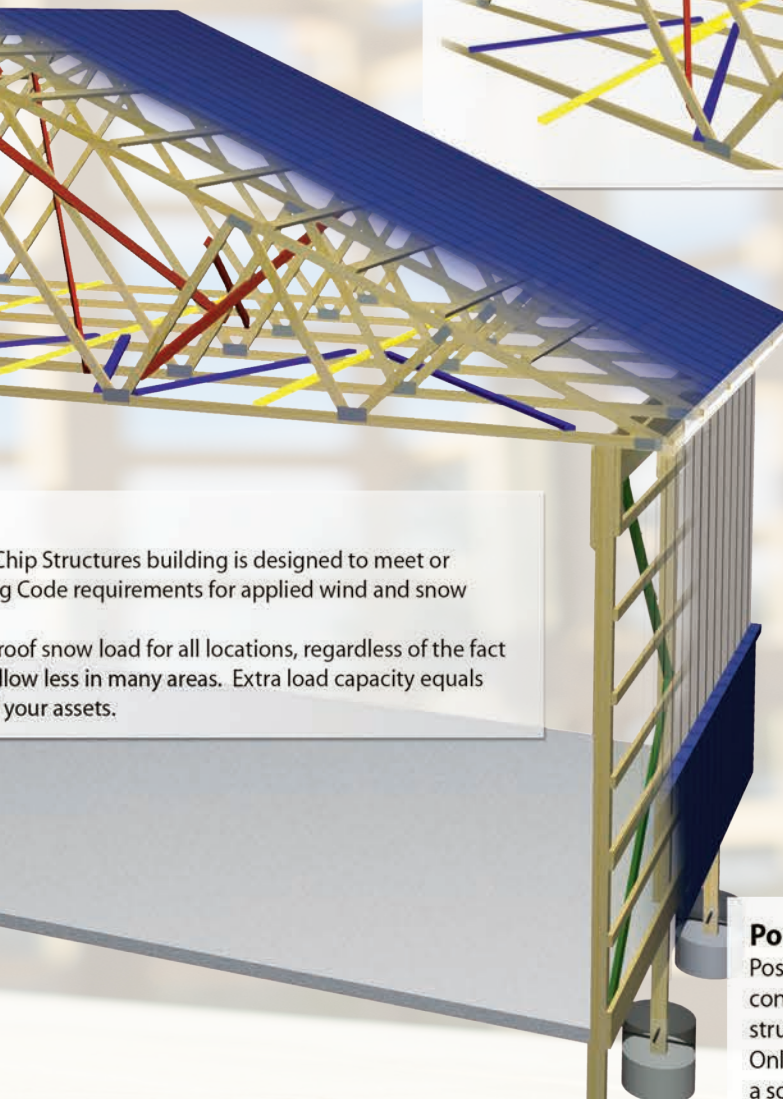


X-Bracing

X-Bracing (in red color) is critical in stabilizing the roof system at the ends of the building as well as at interior locations. Our 'in-plane' bracing system insures a direct connection from brace to truss web without the use of complicated connections.

Lateral and Diagonal Bracing

Lateral and diagonal bracing (in yellow and blue color respectively) restrains truss chords and truss webs from buckling stresses associated with the large loads a truss is designed to carry. Blue Chip Structures overlapping lateral brace design creates extra nailing points for additional load transfer from one brace to another.



Blue Chip Structures building is designed to meet or exceed building code requirements for applied wind and snow

roof snow load for all locations, regardless of the fact that snow load may be less in many areas. Extra load capacity equals extra protection for your assets.

Wall Bracing

Wall bracing is utilized in a variety of forms to insure that loads from higher points are properly transferred to the ground. In addition, wall bracing insures that your building stays square during construction and for the life of the project.



Typical Corner Brace



High Strength Shear Wall

Post Foundation

Posts are embedded in the ground a minimum of 48" to the top of a poured concrete footing and surrounded with a wood collar or concrete collar with a structural re-bar attachment to the post to resist any lateral and uplift loads. Only poured in place pre-mixed concrete is specified in our footings to insure a solid foundation which doesn't rely on soil leveling or soil moisture to provide proper building support. Where a poured concrete wall is required, posts are fastened to the top of the wall with heavy duty structural anchorage.



Post with Concrete Collar and Rebar

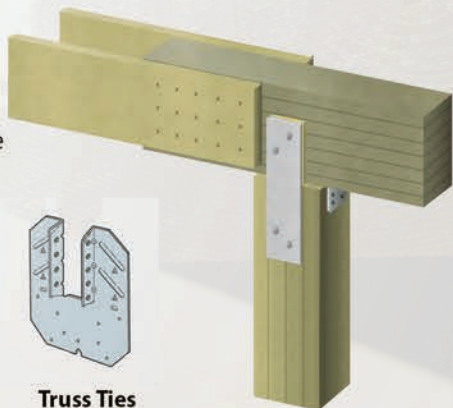


Post with Uplift Blocks



Post on Foundation Wall

est
nding
ate
ee the



Truss Ties

Beam / Header to Post

s
tors

BLUE CHIP STRUCTURES

701 E. Linden St., Richland, PA 17087 • Phone 717-866-6581 • Fax 717-866-7237
bluechipstructures.com • rigidply.com

WHY BLUE CHIP STRUCTURES, INC?

“BLUE CHIP STRUCTURES ARE NOT JUST WARRANTED, THEY ARE DESIGNED TO PERFORM”

BEST DESIGN: Every Blue Chip Structure is engineered for its specified structural performance. Blue Chip Structures combine the latest design technology and the selection of only the best components available. Blue Chip's structures are the strongest available. A complete set of structural and installation plans along with a detailed material list is provided with every structure.

LONG TERM SUPPLIERS: Rigidply Rafters, Inc.'s long term relationships with customers and suppliers, some over three decades, support Blue Chip's efforts to provide only the best products and designs available.

COMMITMENT: Manufacturing and supplying wood and post frame building components for more than fifty years, the commitment continues as our reputation in the marketplace grows. In this time of uncertainty, the long term stability of Rigidply Rafters and Blue Chip Structures give unmatched credibility to our products, structures and customers.

ENGINEERING: Unique to this industry, Rigidply Rafters and Blue Chip Structures provide access to an in-house engineering team which specializes in wood frame design. All materials utilized as structural members in a Blue Chip Structure are individually engineered. Nothing is left to chance or "rules of thumb".

COMPETITIVE PRICING: Blue Chip Structures provides the maximum possible "value" and is known for its consistent pricing. Blue Chip Structures utilizes only the best, time-tested products in its building packages. A wide variety of products and designs are available and can be assembled together to create a custom building at a very competitive price.

DELIVERY: Rigidply Rafters delivers all of our products on time with our own fleet of trucks and experienced company employed drivers.

WARRANTY: Blue Chip Structures warranty program is second to none. It is backed by a company who has been in this industry for over fifty years and is committed to growing the next fifty years and beyond. Blue Chip's success with its warranty program lies in our commitment to conservative design and using only the best products. "The best products have warranties you'll never use."

