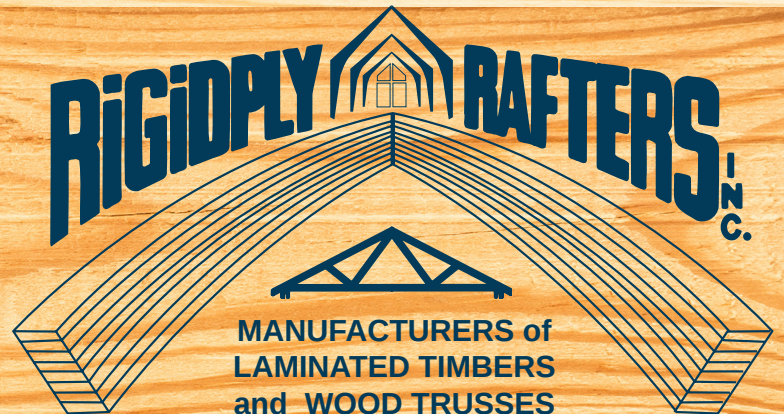


Another **QUALITY** Product from Rigidply Rafters

- SINCE 1954 -

PAVILIONS



...STRONG...DURABLE...EASY TO BUILD RIGIDPLY'S PAVILIONS

- RIGIDPLY'S STANDARD PAVILIONS -

LAMINATED BEAMS: Rigidply Rafters, Inc. double-tapered pitched beam, glue laminated Southern Yellow Pine.

TONGUE & GROOVE DECKING: Roof deck to be furnished in lengths so that all joints occur over supports. Nominal 2x6 tongue and groove, #1 K.D. 19% m.c., Southern Yellow Pine installed according to AITC 112-93 "cantilever pieces intermixed" Section 6-3.4 and typically fastened with two sixteen penny common nails per 2x6 at each bearing location, spliced on beams with alternating splices.

SUPPORT COLUMNS: Rigidply Rafters, Inc. full length treated Glue-Laminated post. Treatment to be CCA, 0.60 pounds per cubic foot retention, according to AWPA C-28.

ROOFING SYSTEM: Fascia will be Alaskan Yellow Cedar. Fiberglass Architectural Shingles are Lifetime-Limited Warranty, with synthetic underlayment. All roofing nails will be galvanized, Fascia and drip edge will be applied continuously along the perimeter.

HARDWARE: Steel plate material will be ASTM-A36. Steel plate to be painted powder coated. Nuts, bolts, fasteners and required nails for installation of decking, fascia and roofing to be included in package.

INSTALLATION: Pavilion to be constructed by an experienced contractor according to standard practices of AITC "Timber Construction Manual".

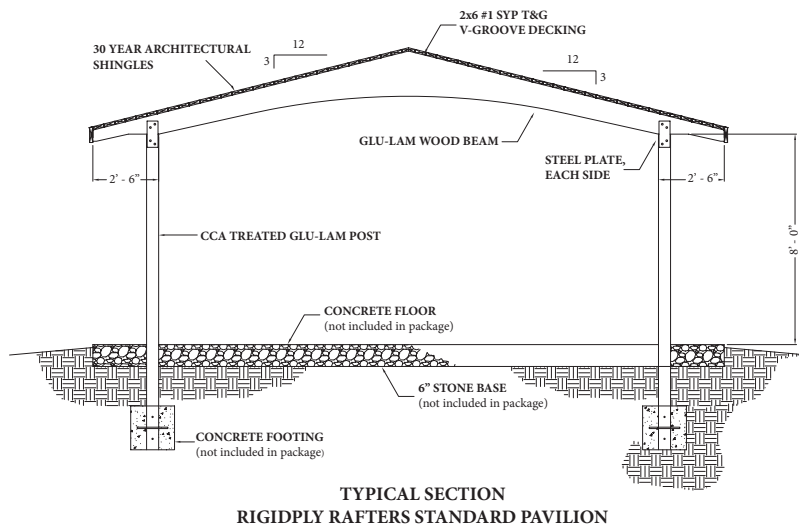
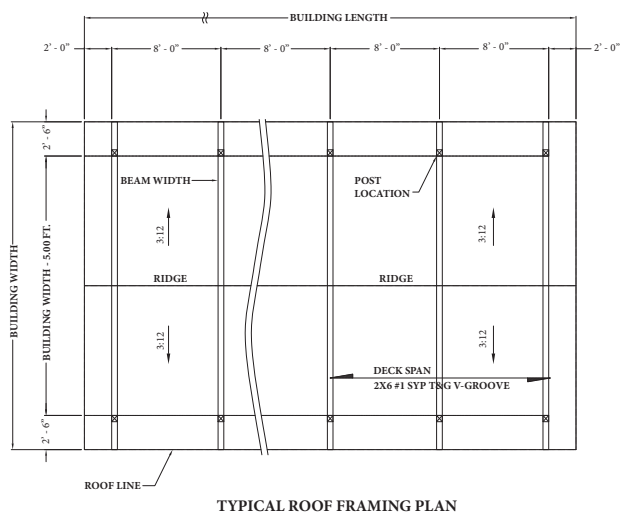
STANDARD SIZES

(WIDTH X LENGTH)

| | | |
|-----------|-----------|-----------|
| 16' X 20' | 24' X 36' | 36' X 44' |
| 16' X 28' | 28' X 36' | 36' X 52' |
| 18' X 20' | 28' X 44' | 36' X 60' |
| 20' X 20' | 28' X 52' | 36' X 68' |
| 20' X 28' | 30' X 44' | 40' X 44' |
| 20' X 36' | 30' X 52' | 40' X 52' |
| 22' X 28' | 30' X 60' | 40' X 60' |
| 24' X 28' | 30' X 68' | 40' X 68' |

CUSTOM PAVILIONS

A variety of shapes and sizes are possible with Laminated Wood Timbers. Contact Rigidply to explore your project's design requirements.



WWW.RIGIDPLY.COM



701 E. Linden Street, Richland PA 17087
717-866-6581 • Fax: 717-866-7237

1283 Joni Miller Road, Oakland MD 21550
301-334-3977 • Fax: 301-334-9289